

MotoAlliance
MA11109



23001 Industrial Blvd
Rogers, MN, 55374
866.527.7637



23001 Industrial Blvd, Rogers, MN 55374 / 1-866-527-7637 / www.motoalliance.com

Denali Plow Mount
MA11109
Polaris Sportsman 400, 500, 800

Thank you for purchasing a MotoAlliance Denali Plow system. You now have a top-of-the-line plow system that makes easy work out of shoving snow and dirt aside with your ATV. Please note the following instructions and heed all warnings.

WARNING!!!

SEVERE INJURY OR DEATH MAY RESULT IF YOU IGNORE ANY OF THE FOLLOWING.

- Read the Plow Operator’s Manual, the Winch Operator’s Manual, and all warning labels before operating.
 - Operate ATV at a walking speed with the blade installed. Do Not exceed 5mph (8 km/h) even with the blade up.
 - Plow Cautiously, impact with a hidden or stationary object may cause the ATV to stop suddenly or go out of control.
 - Do Not operate the ATV on slopes greater than 10° with the plow installed.
 - Do Not stand or ride on the plow.
- Stay clear of moving parts and joints. Keep others away when operating or adjusting plow.
- Inspect the plow mechanism, fasteners, cable, and adjustments before operating. Replace all worn or damaged parts before operating.
 - Lower the plow to the down position before leaving the ATV unattended.

Please verify that all hardware and parts are included in your package

Kit Contents: Please refer to Figure 1

Item	Qty	Description
1	1	MA11109 Plow Mount
2	5	3/8"-16 x 1 1/4" G5 Hex Bolt
3	10	3/8" Flat Washer
4	5	3/8"-16 Nylock Nut
5	2	5/16"-18 x 1" Carriage Bolts
6	2	5/16"-18 Nylock Nuts
7	2	5/16" Flat Washers

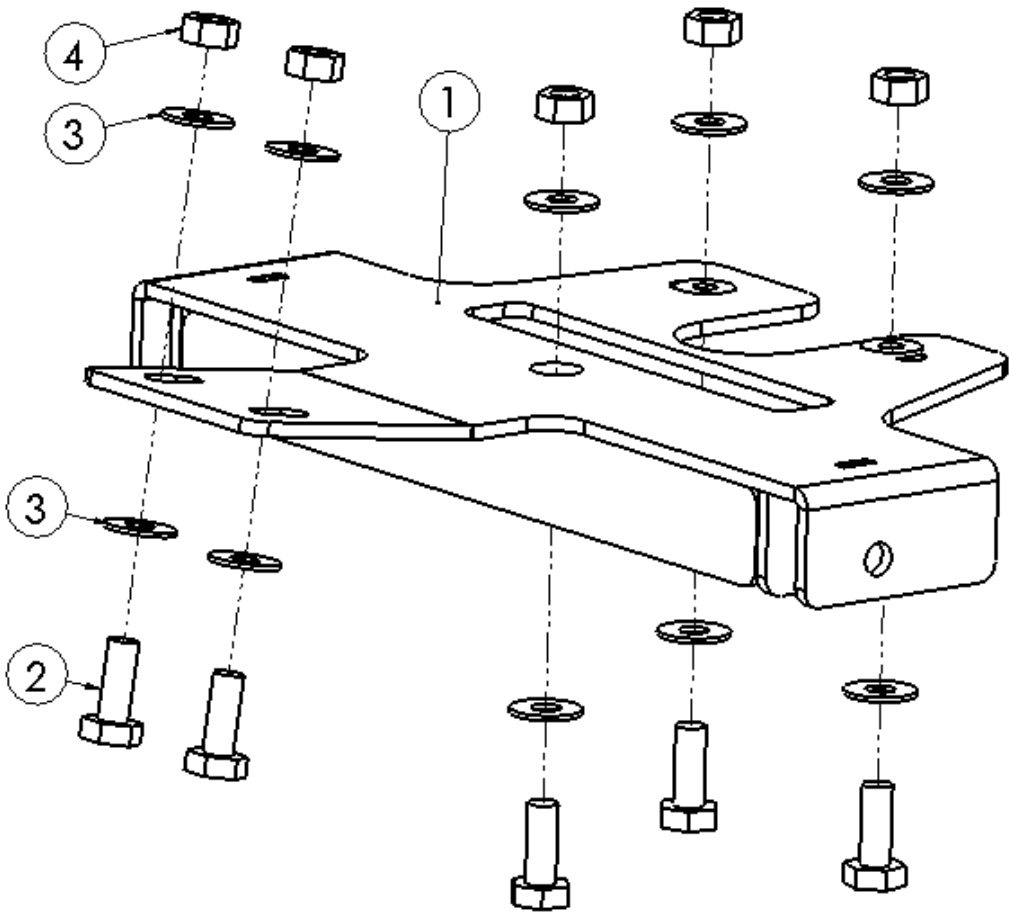


Figure 1

MA11109 Plow Mount Installation

1. Hold the mount up to the underside of the Sportsman with the two tabs facing the ground as seen in (Figure 1). Align the front angled face of the mount with the bolt holes shown in (Figure 2). Use (2) of the 3/8"x 1 1/4" Hex Bolts to secure the front end of the mount to the ATV frame. **Note: Do Not tighten these bolts at this time.**

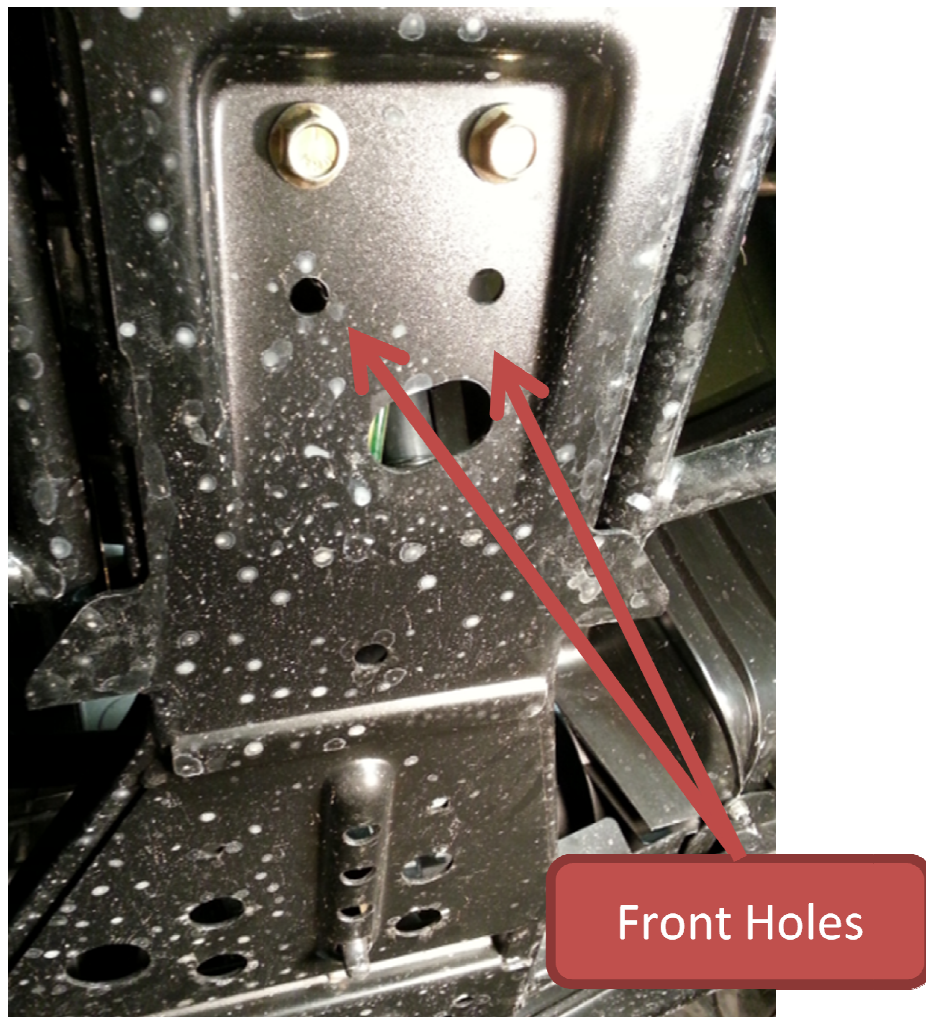


Figure 2

2. With the two front bolts in place, align the remaining bolts with the predrilled holes in your Sportsman frame. Install the remaining 3/8" Hex Bolts as shown in (Figure 1 and Figure 3).

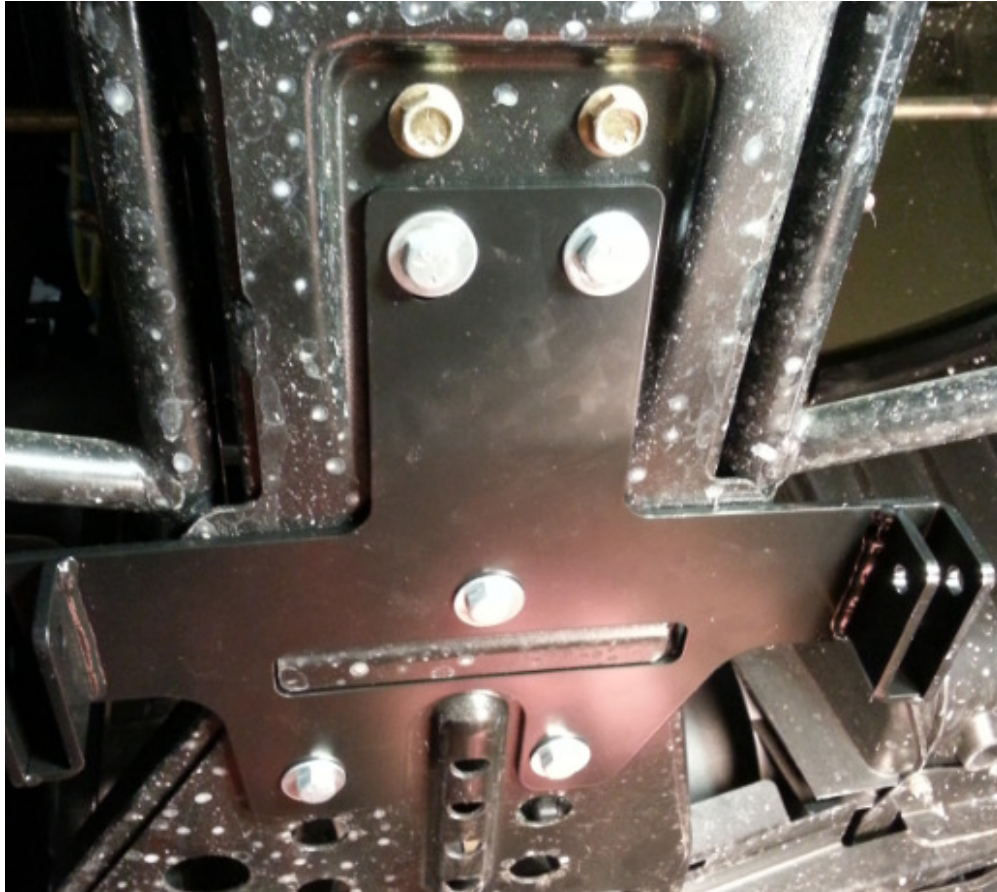


Figure 3

3. Tighten all hardware and attach your plow using the Quick Connect Pins included in your Denali Plow Kit.

2015+ Sportsman 570 and ETX

4. The battery will interfere with the rear most Hex Bolts, in this case use the included 5/16" Carriage Bolts from the top of the machine to secure the rear most bolts.

